

Directions

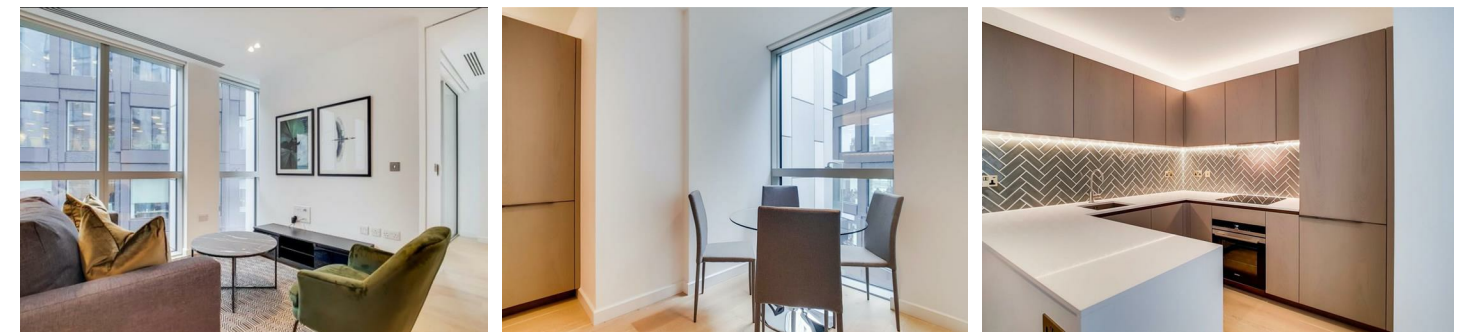
Viewings

Viewings by arrangement only. Call 02033696888 to make an appointment.

EPC Rating

B

Energy Efficiency Rating		Current	Potential
Very energy efficient - lower running costs			
(92 plus) A			
(81-91) B		82	
(69-80) C			
(55-68) D			
(39-54) E			
(21-38) F			
(1-20) G			
Not energy efficient - higher running costs			
England & Wales		EU Directive 2002/91/EC	



CN91 Apartment 905, Atlas Building 145 City Road, London, EC1V 1AA

£650

Atlas Building 145 City Road, London EC1V 1AA

*** Please quote reference JC230645 when contacting the agency ***

Welcome to this stunning new build flat located in the vibrant Shoreditch area of London. Spanning an impressive 592 square feet, this contemporary one-bedroom property offers a perfect blend of modern living and urban convenience. Built in 2019, the flat features a spacious reception room that provides a welcoming atmosphere, ideal for both relaxation and entertaining.

The property boasts a well-appointed bathroom and a stylish bedroom, ensuring comfort and privacy. Residents will enjoy an array of exceptional amenities, including a 24-hour concierge service, a fully equipped gym, a residents' lounge and a residents screening room. For those seeking leisure and relaxation, the residents' swimming pool and spa facilities offer a perfect retreat from the hustle and bustle of city life.

Situated in the lively Shoreditch area, this flat benefits from fantastic transport links, with Old Street Station just a short walk away. This prime location allows for easy access to the best of London, including trendy cafes, restaurants, and cultural hotspots.

This flat is an ideal choice for professionals or couples looking for a modern home in one of London's most sought-after neighbourhoods. With its excellent amenities and convenient location, this property is not to be missed.



Council Tax Band: E

